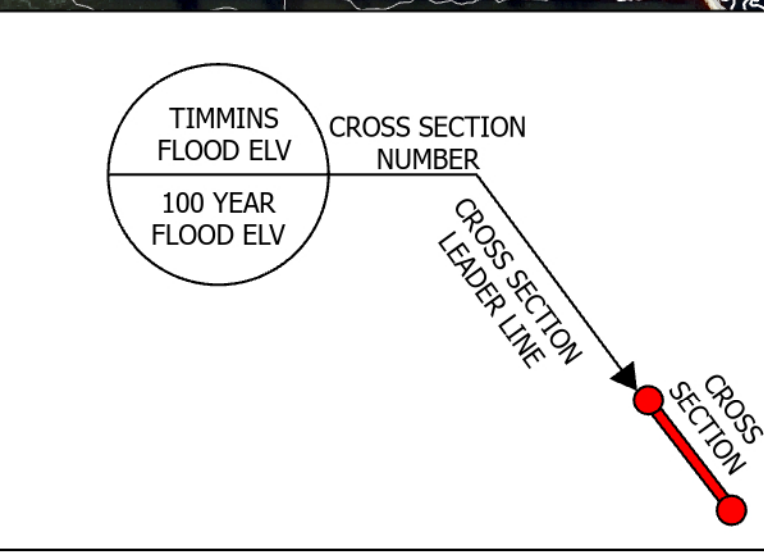




LEGEND:

- BENCHMARKS
- VERTICLE CONTROL POINT
- WATER AND WEATHER MON. STATION
- COLD CREEK CROSS SECTIONS
- ONT TRAIL NETWORK
- COLD CREEK WATER COURSE
- REGIONAL FLOOD LIMIT
- INUNDATION AREA
- 100 YEAR (1% AEP) FLOOD ELEV
- LOT FABRICS
- FRANKFORD URBAN BOUNDARIES
- RAIL ROAD TRACKS
- MINOR CON (1m)
- MAJOR CON (5m)
- RECREATIONAL AREAS
- PARK / CONSERVATION AREA
- GOLF COURSE



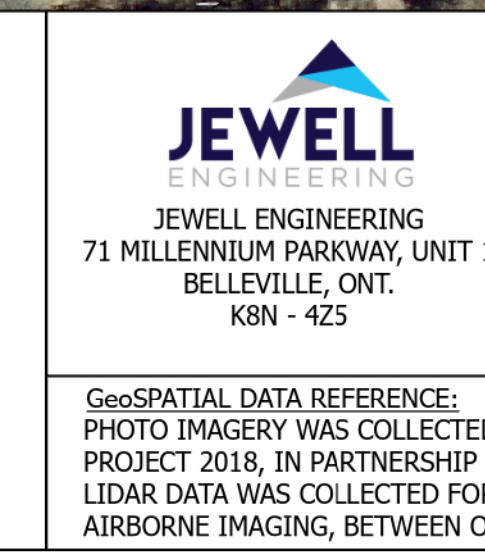
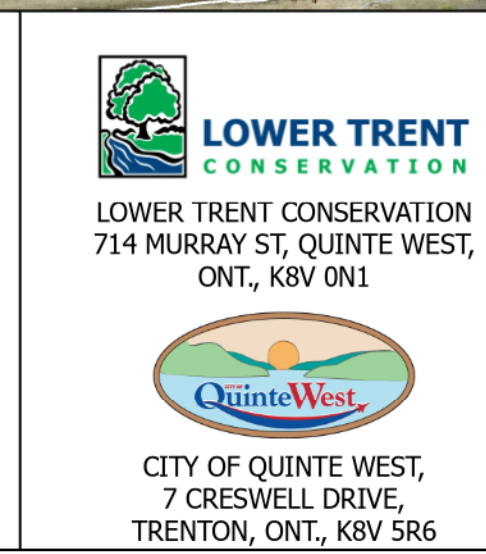
COLD CREEK FLOOD PLAIN
WATER COURSE: COLD CREEK
SHEET: CCFPM1
SHEETS: 1 OF 3

DRAWN BY: ASG
 CHECKED BY: EF
 APPROVED BY: BK
 MAP DATE: 02_26_2024
 PROJECT NUMBER: 2305292

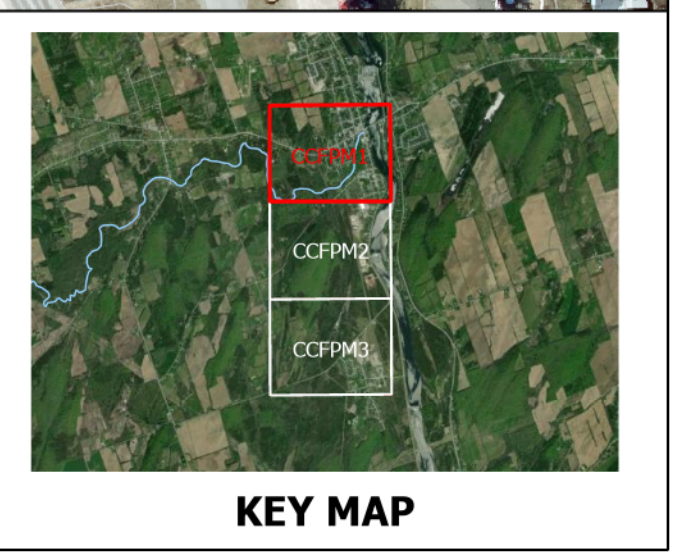
TOWNSHIP: CITY OF QUINTE WEST
 COUNTY: HASTINGS COUNTY

PROJECT DIRECTOR:
 BRYON KEENE, P. ENG.

DESIGN ENGINEER:
 ELLIOTT FIEDERLES, P. ENG.



SCALE: 1:2000
 MAJOR CONTOUR INTERVAL: 5m
 MINOR CONTOUR INTERVAL: 1m
 LIDAR PROJECT CONTROL DATUM:
 HORIZONTAL DATUM: NAD 83 CSRS
 (EPOCH 2010.0)
 VERTICAL DATUM: CGVD 2013



ELEVATIONS ARE IN METERS. BENCH MARK DATA WAS DOWNLOADED FROM COSINE Online Service, MNR, <https://www.ontario.ca/page/geodesy>