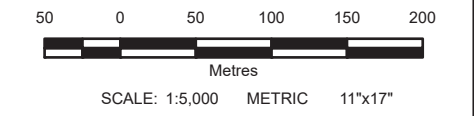


- LEGEND:**
- Station Number, Regulatory Flood Elevation (metres)
  - 80.02 Water Surface Elevation
  - Cross Section
  - 5 m Index Contour
  - 1 m Contour
  - Existing Floodlines
  - 2D Model Extent
  - Regulatory Floodplain (100 Year - 1% AEP)



- NOTES:**
1. LIDAR elevation dataset provided by Land Information Ontario (LIO) and Natural Resources Canada (NRCAN). Datasets included OMAFRA (Peterborough) dated 2016-2017 (LIO) and Belleville dated 2022 (NRCAN).
  2. Aerial photography, dated 2013, was provided by Land Information Ontario (LIO) as part of the South Central Orthophotography Project (SCOOP).
  3. Maps are prepared in Projection NAD 83, UTM Zone 18, CSRS. Vertical reference datum used is Canadian Geodetic Vertical Datum of 2013 (CGVD2013). Elevations are in metres above sea level (MSL).
  4. The Regulatory Floodplain lines shown in this map were prepared using hydraulic models as described in: KGS Group, 2024, "Trent River Floodplain Mapping Update - Floodplain Mapping Report"



All units are metric and in metres unless otherwise specified. Transverse Mercator Projection, NAD83 UTM Zone 18 CSRS. Elevations are in metres above sea level (MSL).

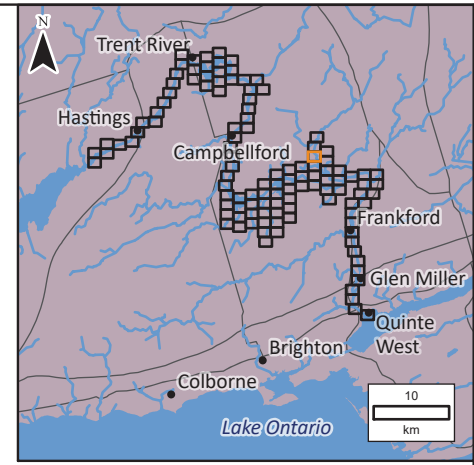
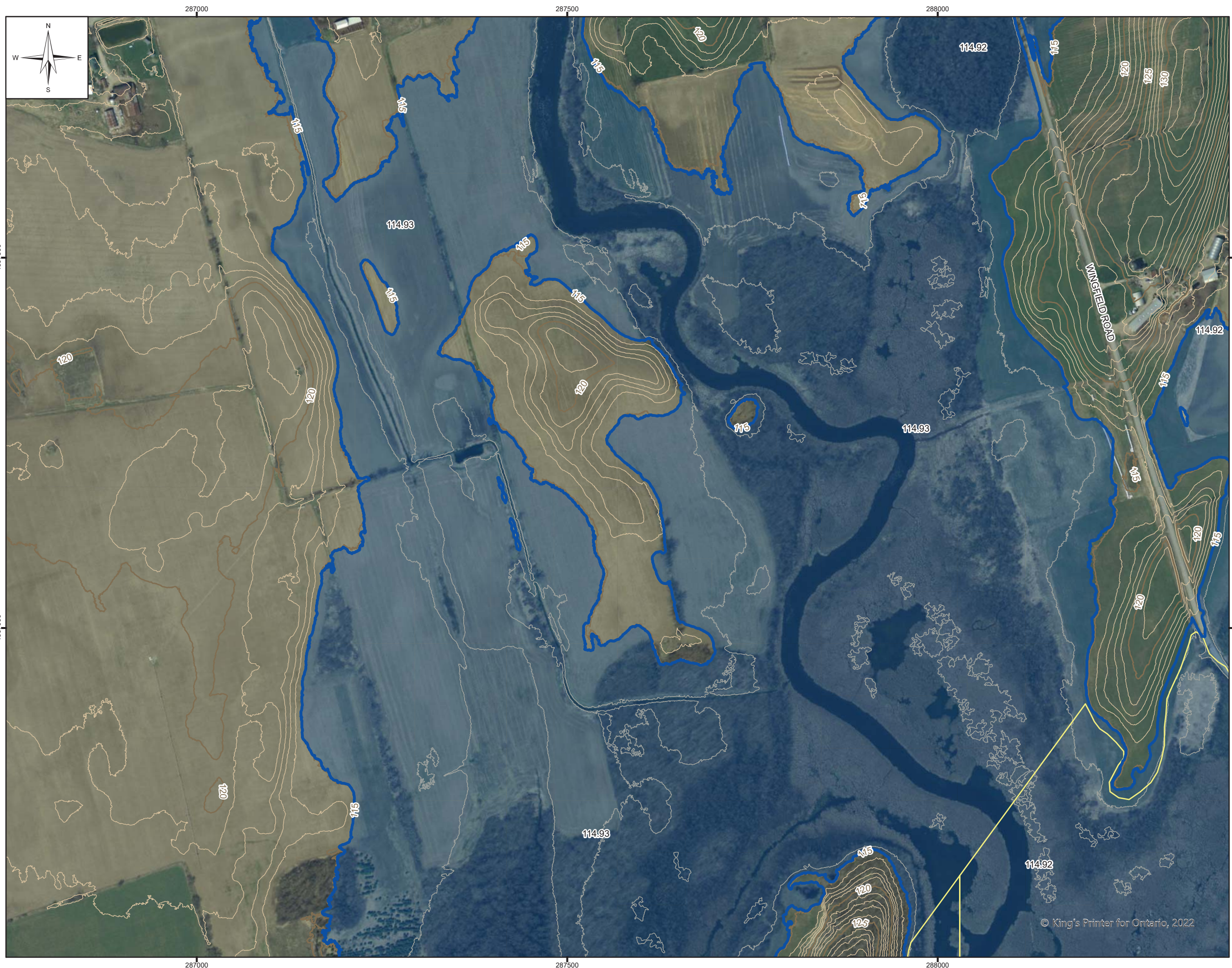
NO	DATE	DESCRIPTION	ISSUED BY	CHECK BY
0	24/02/29	ISSUED WITH FINAL REPORT	FGC	AB

REVISIONS / ISSUE

TRENT RIVER FLOODPLAIN MAPPING UPDATE

REGULATORY FLOODPLAIN MAP

FEBRUARY 2024	(SHEET 84 OF 117)	REV: 0
---------------	-------------------	--------



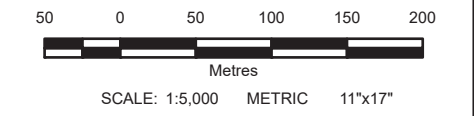
**LEGEND:**

- Station Number, Regulatory Flood Elevation (metres)
- 80.02 Water Surface Elevation
- Cross Section
- 5 m Index Contour
- 1 m Contour
- Existing Floodlines
- 2D Model Extent
- Regulatory Floodplain (100 Year - 1% AEP)



**NOTES:**

1. LIDAR elevation dataset provided by Land Information Ontario (LIO) and Natural Resources Canada (NRCAN). Datasets included OMAFRA (Peterborough) dated 2016-2017 (LIO) and Belleville dated 2022 (NRCAN).
2. Aerial photography, dated 2013, was provided by Land Information Ontario (LIO) as part of the South Central Orthophotography Project (SCOOP).
3. Maps are prepared in Projection NAD 83, UTM Zone 18, CSRS. Vertical reference datum used is Canadian Geodetic Vertical Datum of 2013 (CGVD2013). Elevations are in metres above sea level (MSL).
4. The Regulatory Floodplain lines shown in this map were prepared using hydraulic models as described in: KGS Group, 2024, "Trent River Floodplain Mapping Update - Floodplain Mapping Report"



All units are metric and in metres unless otherwise specified. Transverse Mercator Projection, NAD83 UTM Zone 18 CSRS. Elevations are in metres above sea level (MSL).

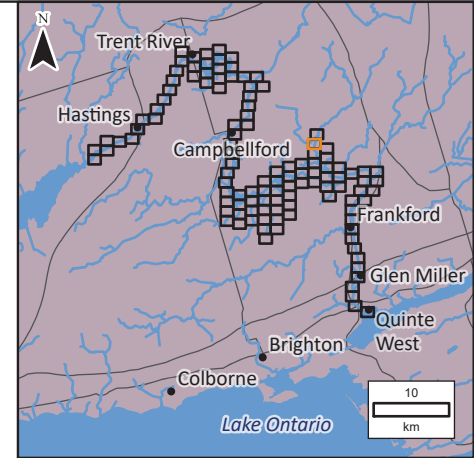
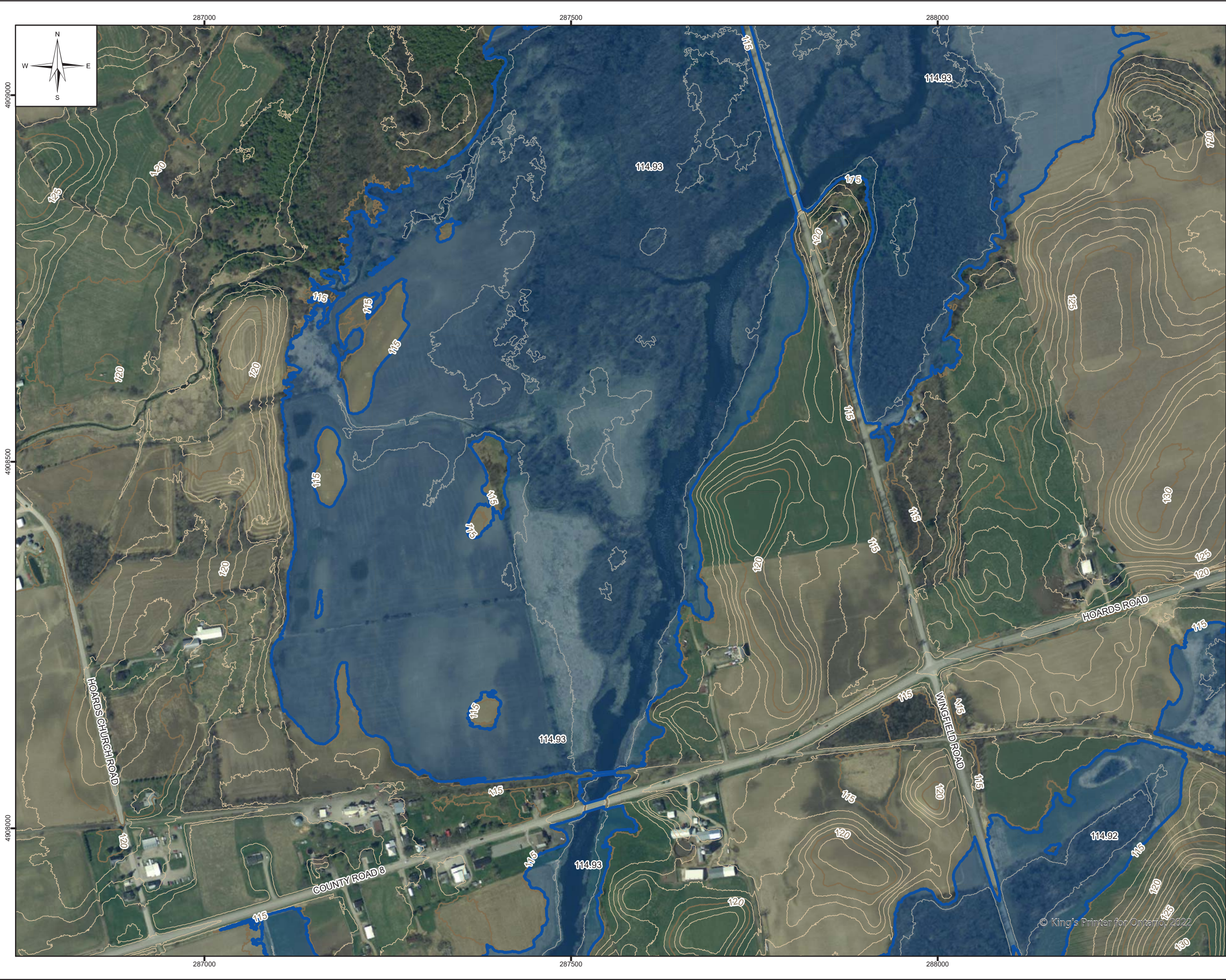
NO	YYMMDD	DESCRIPTION	ISSUED BY	CHECK BY
0	24/02/29	ISSUED WITH FINAL REPORT	FGC	AB

REVISIONS / ISSUE

TRENT RIVER FLOODPLAIN MAPPING UPDATE

REGULATORY FLOODPLAIN MAP

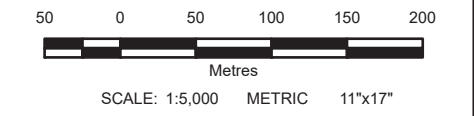
FEBRUARY 2024	(SHEET 85 OF 117)	REV: 0
---------------	-------------------	--------



- LEGEND:**
- Station Number, Regulatory Flood Elevation (metres)
  - 80.02 Water Surface Elevation
  - Cross Section
  - 5 m Index Contour
  - 1 m Contour
  - 2D Model Extent
  - Regulatory Floodplain (100 Year - 1% AEP)



- NOTES:**
1. LIDAR elevation dataset provided by Land Information Ontario (LIO) and Natural Resources Canada (NRCAN). Datasets included OMAFRA (Peterborough) dated 2016-2017 (LIO) and Belleville dated 2022 (NRCAN).
  2. Aerial photography, dated 2013, was provided by Land Information Ontario (LIO) as part of the South Central Orthophotography Project (SCOOP).
  3. Maps are prepared in Projection NAD 83, UTM Zone 18, CSRS. Vertical reference datum used is Canadian Geodetic Vertical Datum of 2013 (CGVD2013). Elevations are in metres above sea level (MSL).
  4. The Regulatory Floodplain lines shown in this map were prepared using hydraulic models as described in: KGS Group, 2024, "Trent River Floodplain Mapping Update - Floodplain Mapping Report"



All units are metric and in metres unless otherwise specified. Transverse Mercator Projection, NAD83 UTM Zone 18 CSRS. Elevations are in metres above sea level (MSL).

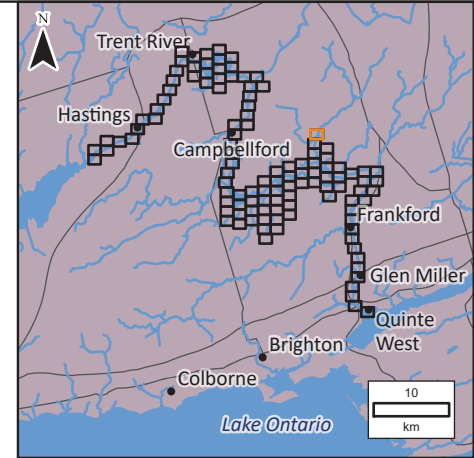
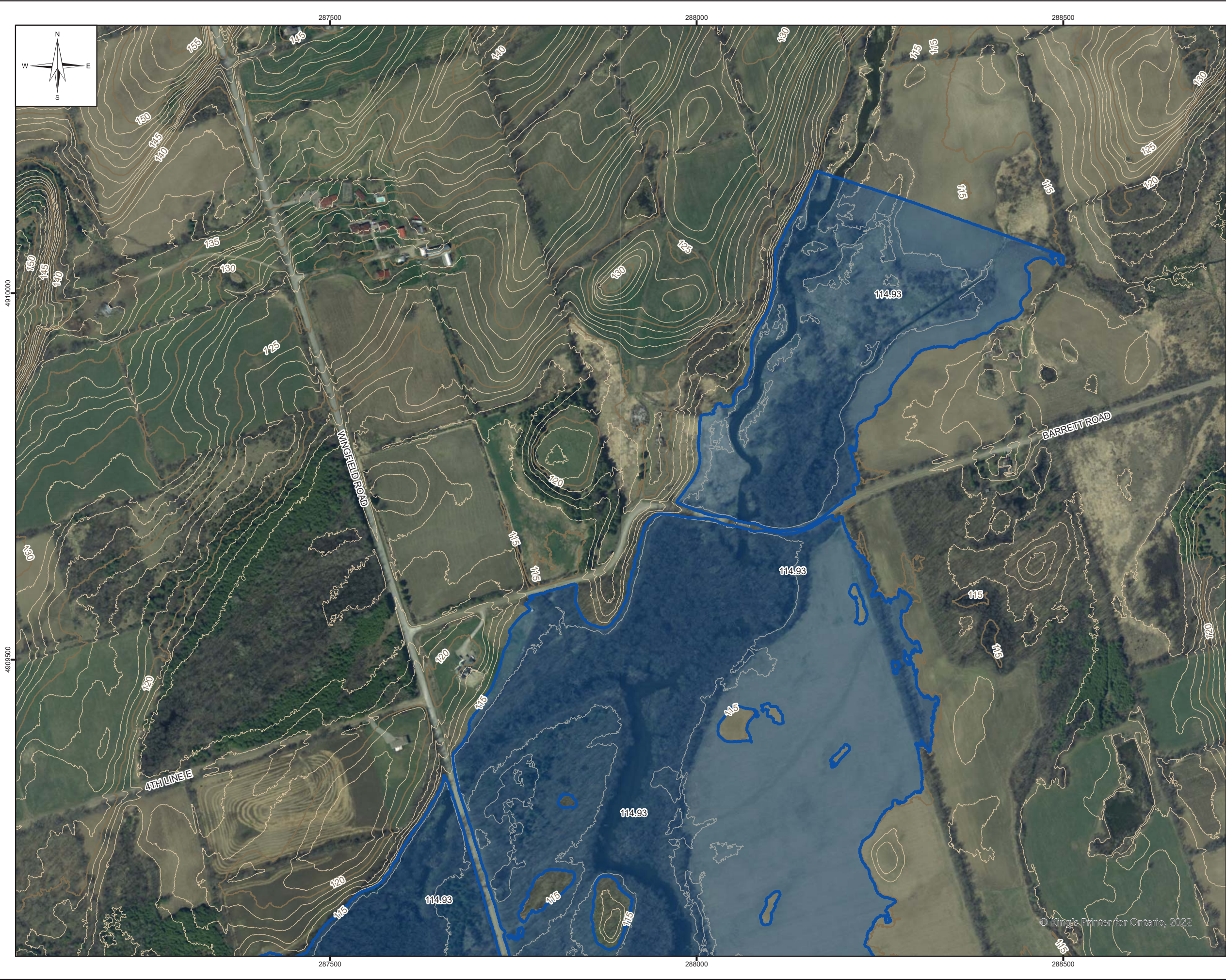
0	24/02/29	ISSUED WITH FINAL REPORT	FGC	AB
NO.	YYMMDD	DESCRIPTION	ISSUED BY	CHECK BY

REVISIONS / ISSUE

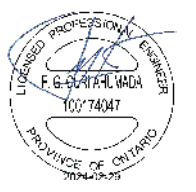
TRENT RIVER FLOODPLAIN MAPPING UPDATE

REGULATORY FLOODPLAIN MAP

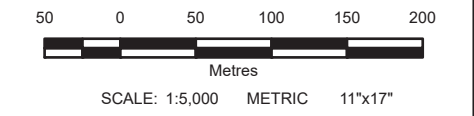
FEBRUARY 2024	(SHEET 86 OF 117)	REV: 0
---------------	-------------------	--------



- LEGEND:**
- Station Number, Regulatory Flood Elevation (metres)
  - 80.02 Water Surface Elevation
  - Cross Section
  - 5 m Index Contour
  - 1 m Contour
  - 2D Model Extent
  - Regulatory Floodplain (100 Year - 1% AEP)



- NOTES:**
1. LIDAR elevation dataset provided by Land Information Ontario (LIO) and Natural Resources Canada (NRCAN). Datasets included OMAFRA (Peterborough) dated 2016-2017 (LIO) and Belleville dated 2022 (NRCAN).
  2. Aerial photography, dated 2013, was provided by Land Information Ontario (LIO) as part of the South Central Orthophotography Project (SCOOP).
  3. Maps are prepared in Projection NAD 83, UTM Zone 18, CSRS. Vertical reference datum used is Canadian Geodetic Vertical Datum of 2013 (CGVD2013). Elevations are in metres above sea level (MSL).
  4. The Regulatory Floodplain lines shown in this map were prepared using hydraulic models as described in: KGS Group, 2024, "Trent River Floodplain Mapping Update - Floodplain Mapping Report"



All units are metric and in metres unless otherwise specified. Transverse Mercator Projection, NAD83 UTM Zone 18 CSRS. Elevations are in metres above sea level (MSL).

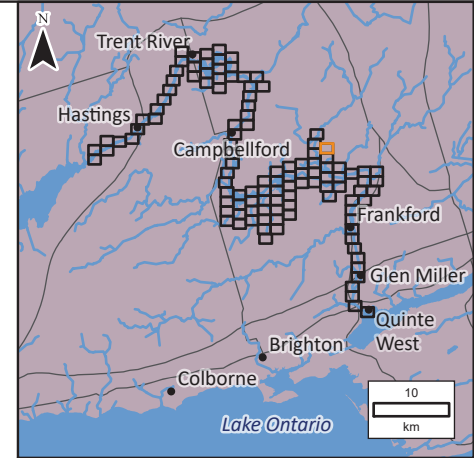
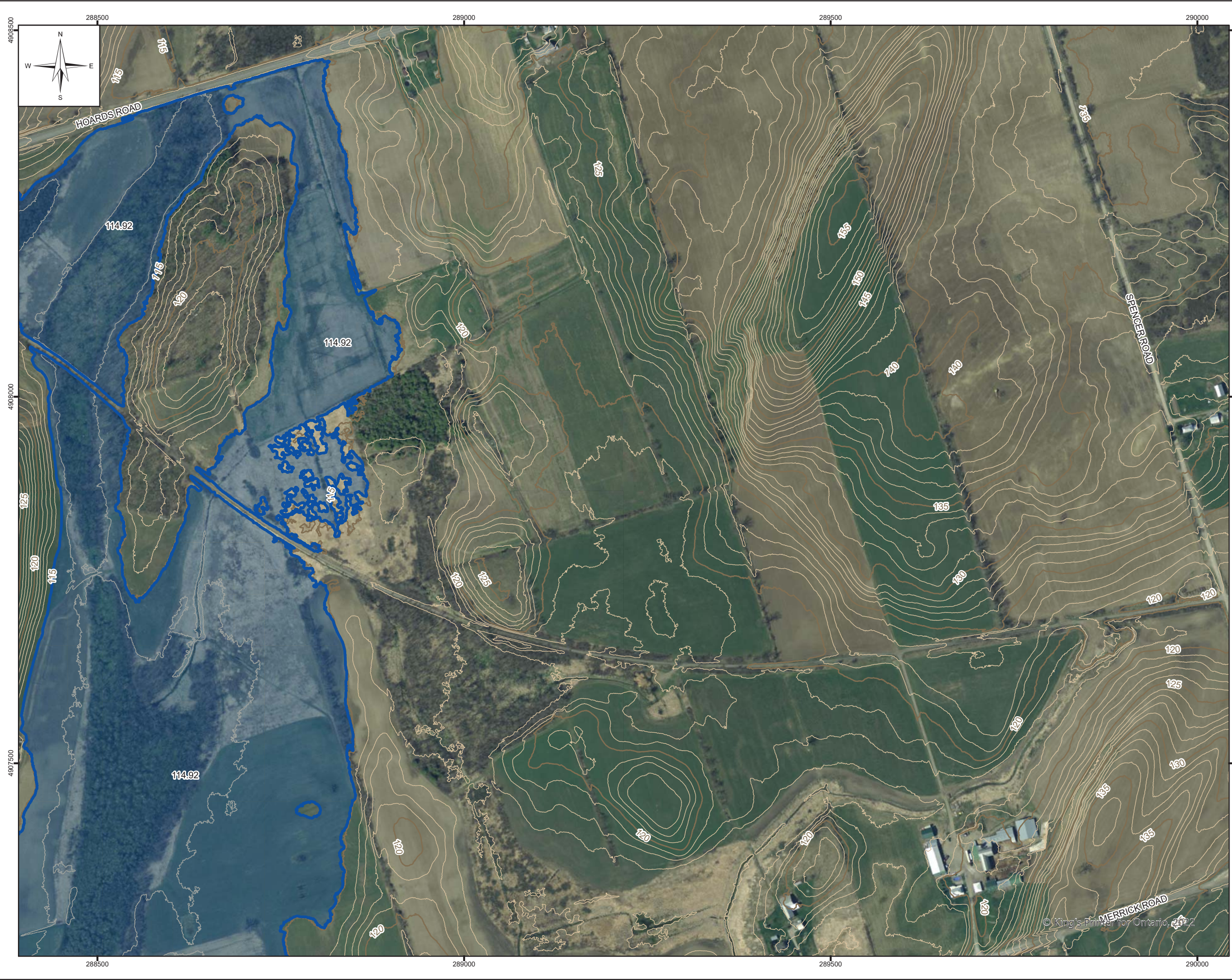
NO.	DATE	DESCRIPTION	ISSUED BY	CHECK BY
0	24/02/29	ISSUED WITH FINAL REPORT	FGC	AB

REVISIONS / ISSUE

TRENT RIVER FLOODPLAIN MAPPING UPDATE

REGULATORY FLOODPLAIN MAP

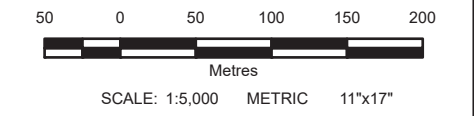
FEBRUARY 2024	(SHEET 87 OF 117)	REV: 0
---------------	-------------------	--------



- LEGEND:**
- Station Number, Regulatory Flood Elevation (metres)
  - 80.02 Water Surface Elevation
  - Cross Section
  - 5 m Index Contour
  - 1 m Contour
  - 2D Model Extent
  - Regulatory Floodplain (100 Year - 1% AEP)



- NOTES:**
1. LIDAR elevation dataset provided by Land Information Ontario (LIO) and Natural Resources Canada (NRCAN). Datasets included OMAFRA (Peterborough) dated 2016-2017 (LIO) and Belleville dated 2022 (NRCAN).
  2. Aerial photography, dated 2013, was provided by Land Information Ontario (LIO) as part of the South Central Orthophotography Project (SCOOP).
  3. Maps are prepared in Projection NAD 83, UTM Zone 18, CSRS. Vertical reference datum used is Canadian Geodetic Vertical Datum of 2013 (CGVD2013). Elevations are in metres above sea level (MSL).
  4. The Regulatory Floodplain lines shown in this map were prepared using hydraulic models as described in: KGS Group, 2024, "Trent River Floodplain Mapping Update - Floodplain Mapping Report"



All units are metric and in metres unless otherwise specified. Transverse Mercator Projection, NAD83 UTM Zone 18 CSRS. Elevations are in metres above sea level (MSL).

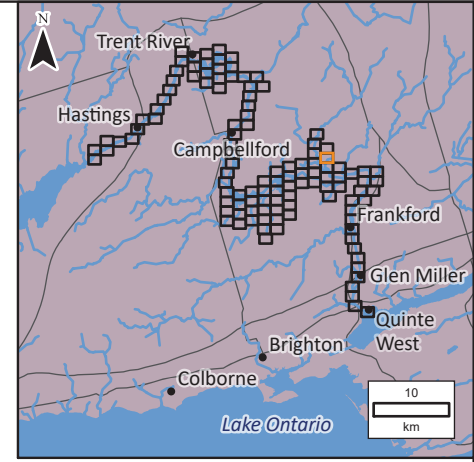
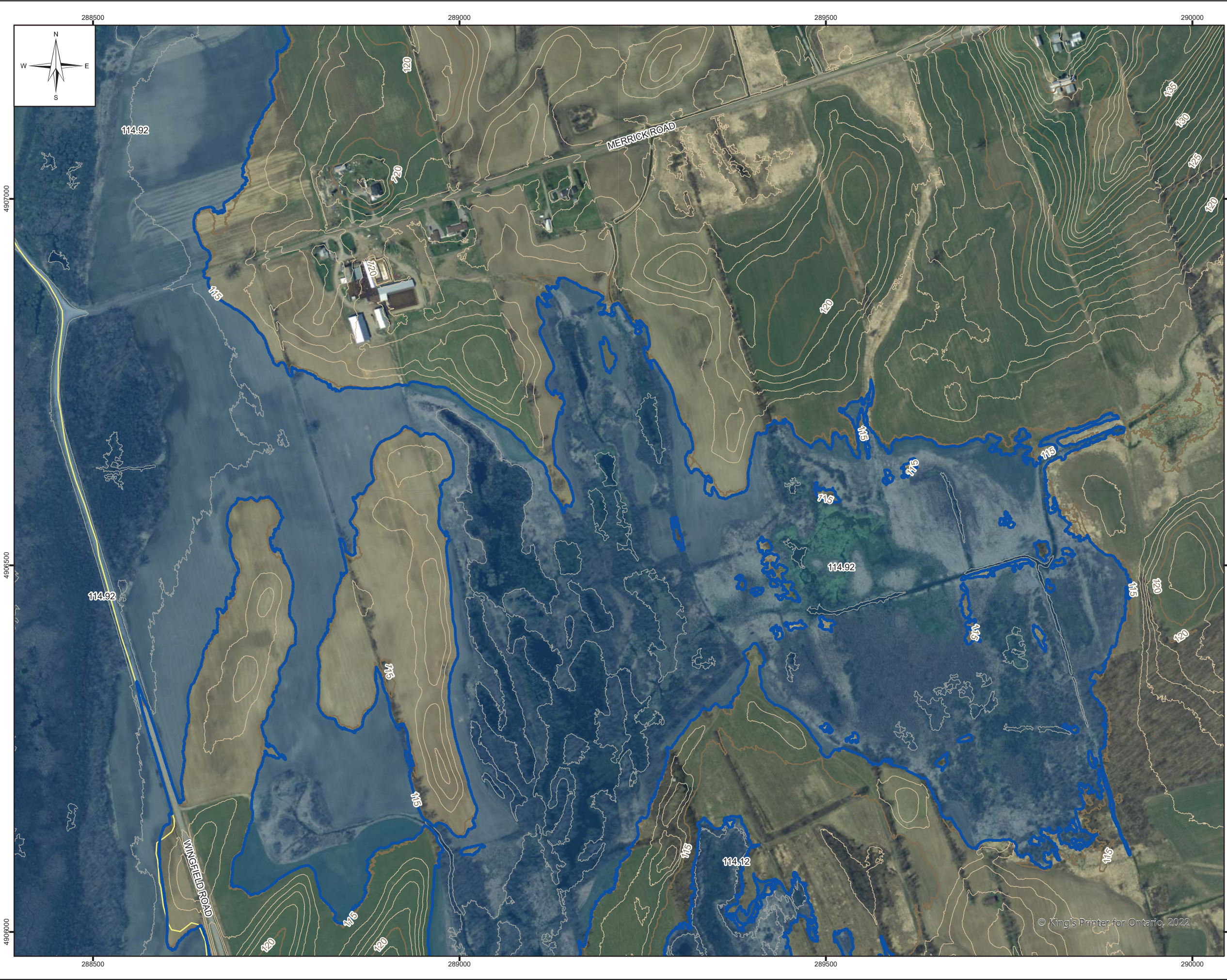
NO	DATE	DESCRIPTION	ISSUED BY	CHECK BY
0	24/02/29	ISSUED WITH FINAL REPORT	FGC	AB

REVISIONS / ISSUE

TRENT RIVER FLOODPLAIN MAPPING UPDATE

REGULATORY FLOODPLAIN MAP

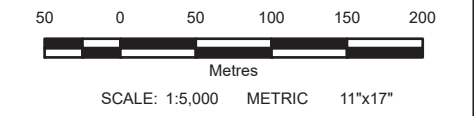
FEBRUARY 2024	(SHEET 88 OF 117)	REV: 0
---------------	-------------------	--------



- LEGEND:**
- Station Number, Regulatory Flood Elevation (metres)
  - 80.02 Water Surface Elevation
  - Cross Section
  - 5 m Index Contour
  - 1 m Contour
  - Existing Floodlines
  - 2D Model Extent
  - Regulatory Floodplain (100 Year - 1% AEP)



- NOTES:**
1. LIDAR elevation dataset provided by Land Information Ontario (LIO) and Natural Resources Canada (NRCAN). Datasets included OMAFRA (Peterborough) dated 2016-2017 (LIO) and Belleville dated 2022 (NRCAN).
  2. Aerial photography, dated 2013, was provided by Land Information Ontario (LIO) as part of the South Central Orthophotography Project (SCOOP).
  3. Maps are prepared in Projection NAD 83, UTM Zone 18, CSRS. Vertical reference datum used is Canadian Geodetic Vertical Datum of 2013 (CGVD2013). Elevations are in metres above sea level (MSL).
  4. The Regulatory Floodplain lines shown in this map were prepared using hydraulic models as described in: KGS Group, 2024, "Trent River Floodplain Mapping Update - Floodplain Mapping Report"



All units are metric and in metres unless otherwise specified. Transverse Mercator Projection, NAD83 UTM Zone 18 CSRS. Elevations are in metres above sea level (MSL).

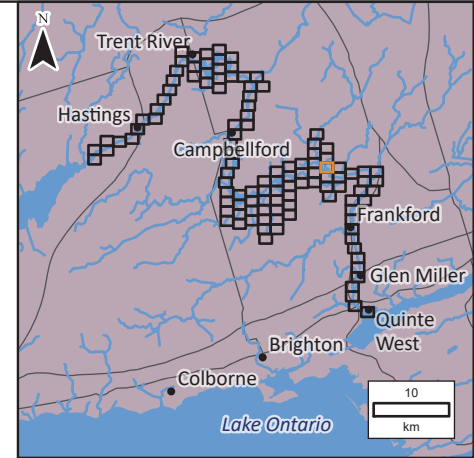
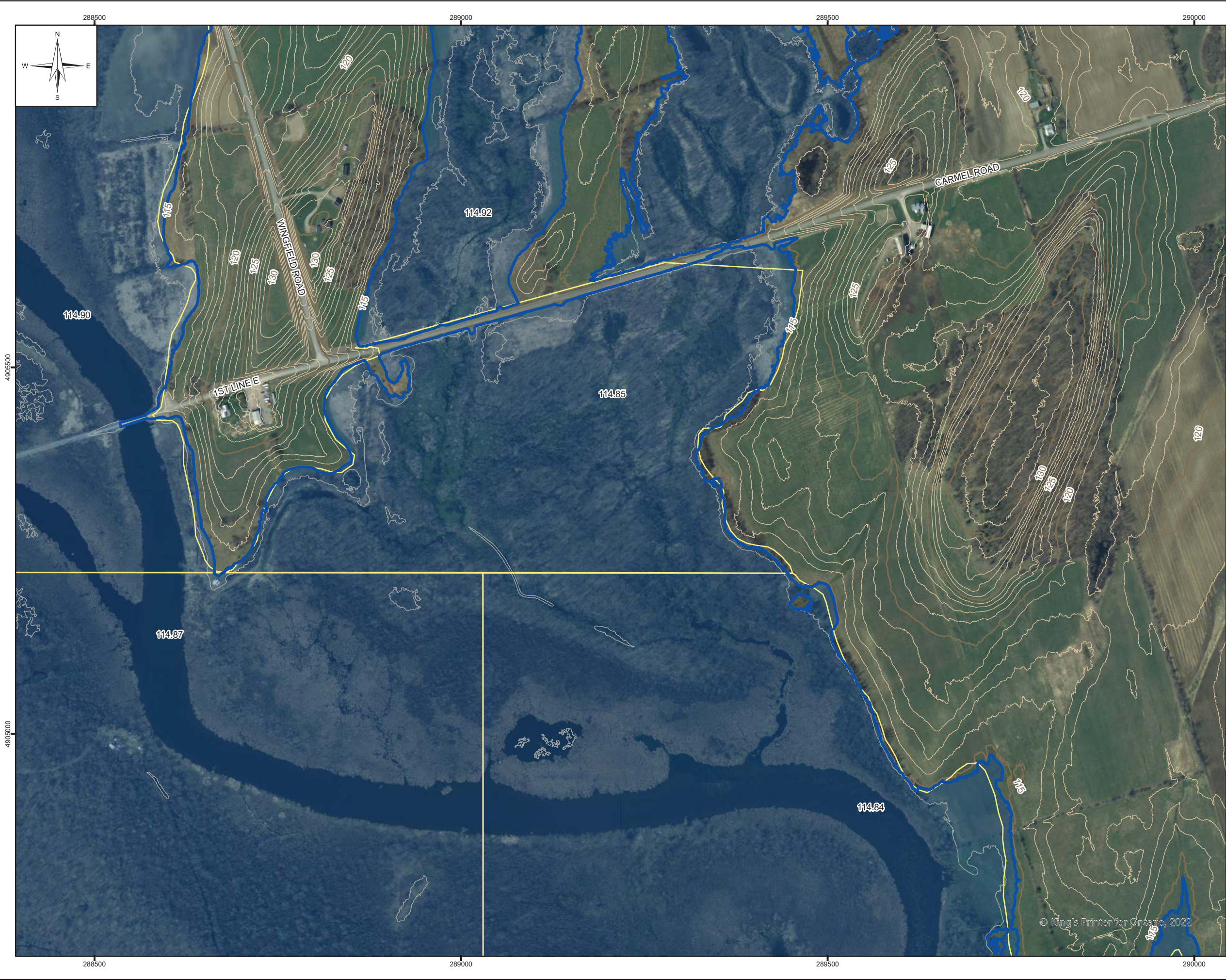
NO	DATE	DESCRIPTION	ISSUED BY	CHECK BY
0	24/02/29	ISSUED WITH FINAL REPORT	FGC	AB

REVISIONS / ISSUE

TRENT RIVER FLOODPLAIN MAPPING UPDATE

REGULATORY FLOODPLAIN MAP

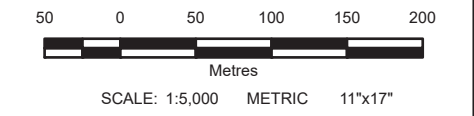
FEBRUARY 2024	(SHEET 89 OF 117)	REV: 0
---------------	-------------------	--------



- LEGEND:**
- Station Number, Regulatory Flood Elevation (metres)
  - 80.02 Water Surface Elevation
  - Cross Section
  - 5 m Index Contour
  - 1 m Contour
  - Existing Floodlines
  - 2D Model Extent
  - Regulatory Floodplain (100 Year - 1% AEP)



- NOTES:**
1. LIDAR elevation dataset provided by Land Information Ontario (LIO) and Natural Resources Canada (NRCAN). Datasets included OMAFRA (Peterborough) dated 2016-2017 (LIO) and Belleville dated 2022 (NRCAN).
  2. Aerial photography, dated 2013, was provided by Land Information Ontario (LIO) as part of the South Central Orthophotography Project (SCOOP).
  3. Maps are prepared in Projection NAD 83, UTM Zone 18, CSRS. Vertical reference datum used is Canadian Geodetic Vertical Datum of 2013 (CGVD2013). Elevations are in metres above sea level (MSL).
  4. The Regulatory Floodplain lines shown in this map were prepared using hydraulic models as described in: KGS Group, 2024, "Trent River Floodplain Mapping Update - Floodplain Mapping Report"



All units are metric and in metres unless otherwise specified. Transverse Mercator Projection, NAD83 UTM Zone 18 CSRS. Elevations are in metres above sea level (MSL).

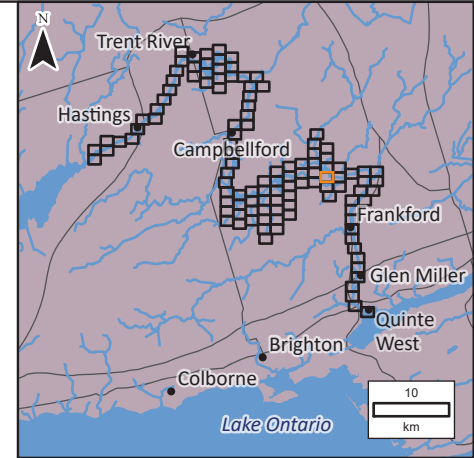
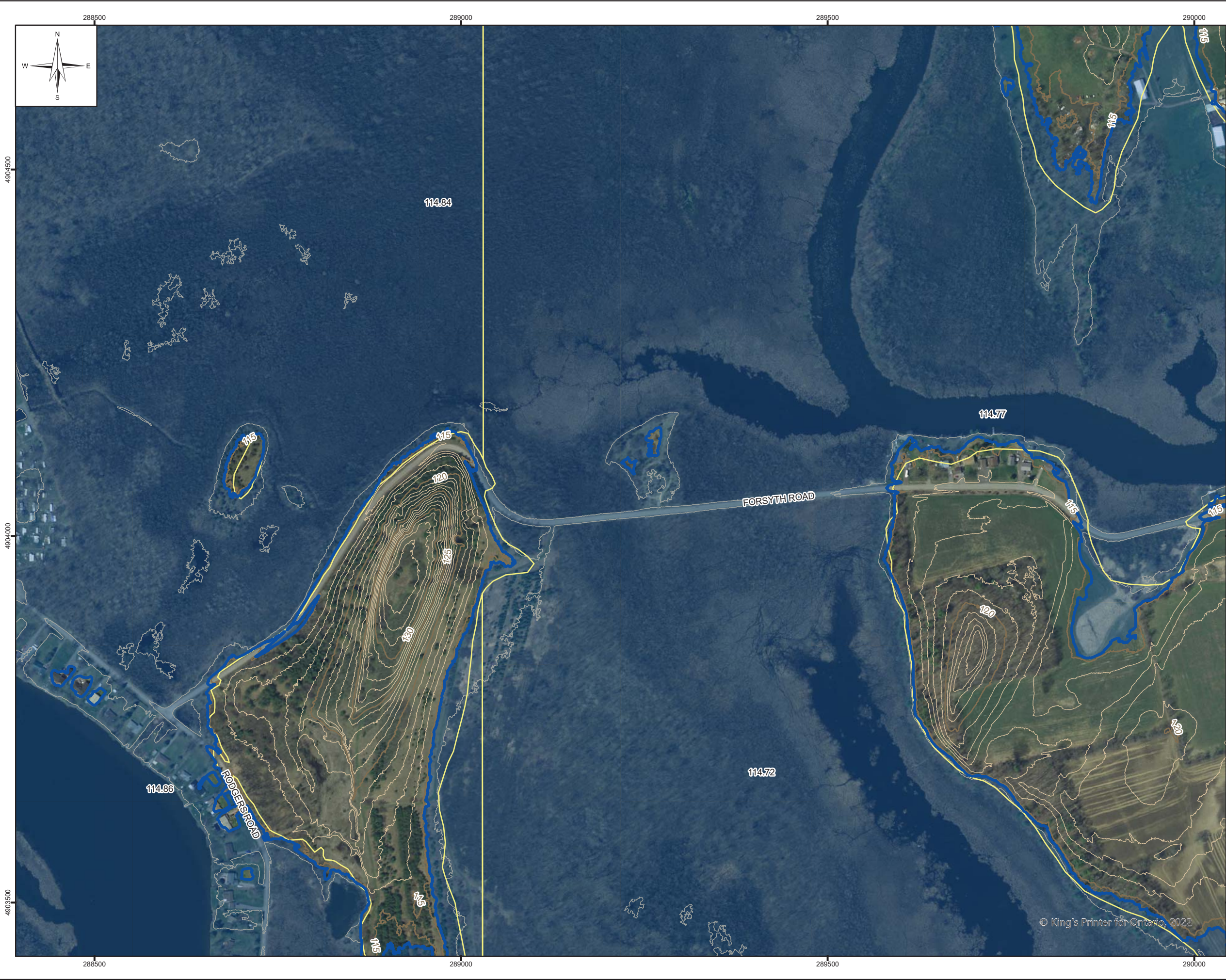
NO.	YYMMDD	DESCRIPTION	ISSUED BY	CHECK BY
0	24/02/29	ISSUED WITH FINAL REPORT	FGC	AB

REVISIONS / ISSUE

TRENT RIVER FLOODPLAIN MAPPING UPDATE

REGULATORY FLOODPLAIN MAP

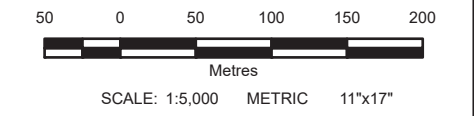
FEBRUARY 2024	(SHEET 90 OF 117)	REV: 0
---------------	-------------------	--------



- LEGEND:**
- Station Number, Regulatory Flood Elevation (metres)
  - 80.02 Water Surface Elevation
  - Cross Section
  - 5 m Index Contour
  - 1 m Contour
  - Existing Floodlines
  - 2D Model Extent
  - Regulatory Floodplain (100 Year - 1% AEP)



- NOTES:**
1. LIDAR elevation dataset provided by Land Information Ontario (LIO) and Natural Resources Canada (NRCAN). Datasets included OMAFRA (Peterborough) dated 2016-2017 (LIO) and Belleville dated 2022 (NRCAN).
  2. Aerial photography, dated 2013, was provided by Land Information Ontario (LIO) as part of the South Central Orthophotography Project (SCOOP).
  3. Maps are prepared in Projection NAD 83, UTM Zone 18, CSRS. Vertical reference datum used is Canadian Geodetic Vertical Datum of 2013 (CGVD2013). Elevations are in metres above sea level (MSL).
  4. The Regulatory Floodplain lines shown in this map were prepared using hydraulic models as described in: KGS Group, 2024, "Trent River Floodplain Mapping Update - Floodplain Mapping Report"



All units are metric and in metres unless otherwise specified. Transverse Mercator Projection, NAD83 UTM Zone 18 CSRS. Elevations are in metres above sea level (MSL).

NO	DATE	DESCRIPTION	ISSUED BY	CHECK BY
0	24/02/29	ISSUED WITH FINAL REPORT	FGC	AB

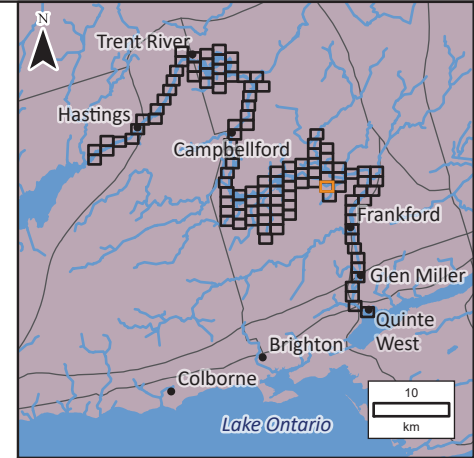
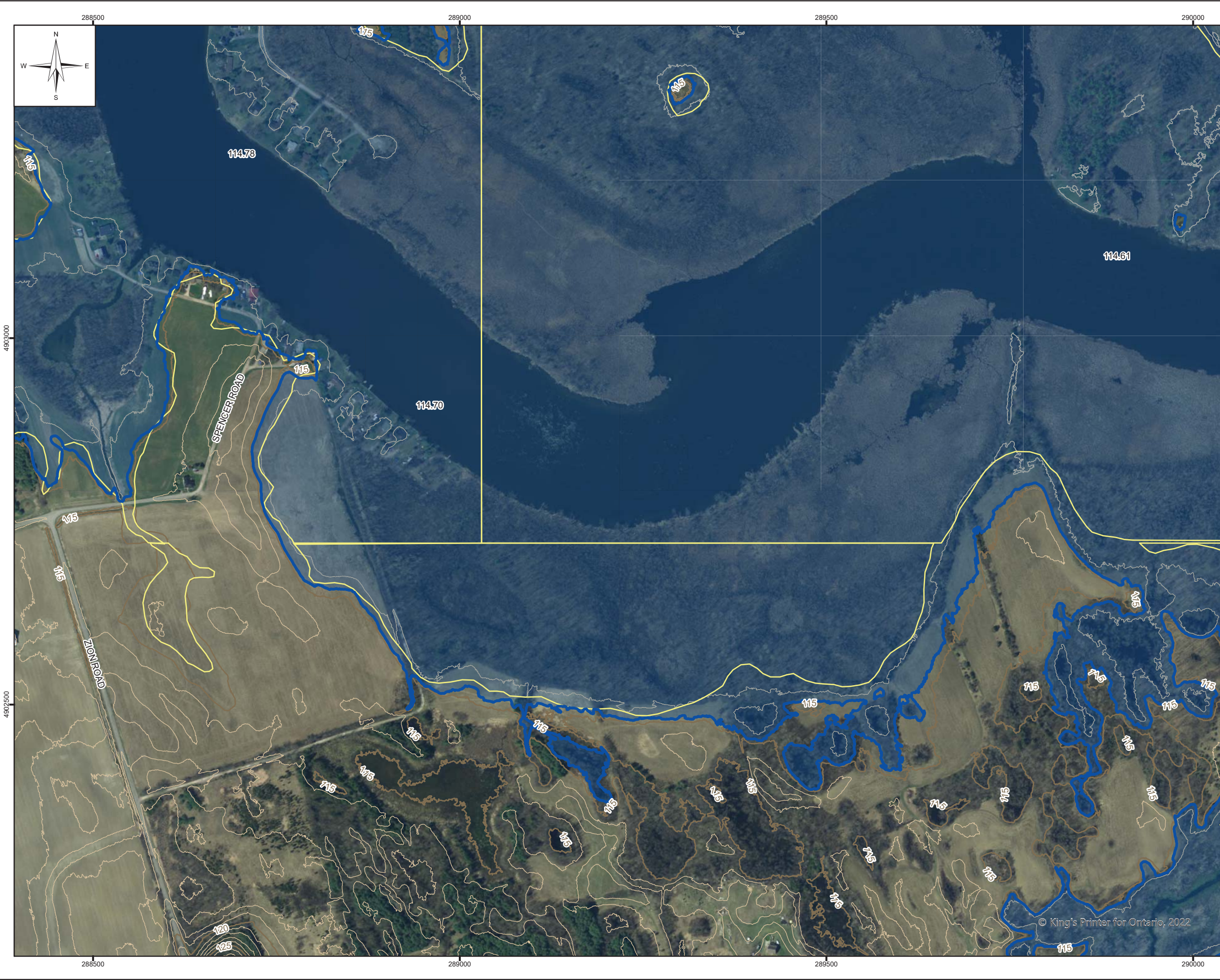
REVISIONS / ISSUE

TRENT RIVER FLOODPLAIN MAPPING UPDATE

REGULATORY FLOODPLAIN MAP

FEBRUARY 2024	(SHEET 91 OF 117)	REV: 0
---------------	-------------------	--------





- LEGEND:**
- Station Number, Regulatory Flood Elevation (metres)
  - 80.02 Water Surface Elevation
  - Cross Section
  - 5 m Index Contour
  - 1 m Contour
  - Existing Floodlines
  - 2D Model Extent
  - Regulatory Floodplain (100 Year - 1% AEP)



- NOTES:**
1. LIDAR elevation dataset provided by Land Information Ontario (LIO) and Natural Resources Canada (NRCAN). Datasets included OMAFRA (Peterborough) dated 2016-2017 (LIO) and Belleville dated 2022 (NRCAN).
  2. Aerial photography, dated 2013, was provided by Land Information Ontario (LIO) as part of the South Central Orthophotography Project (SCOOP).
  3. Maps are prepared in Projection NAD 83, UTM Zone 18, CSRS. Vertical reference datum used is Canadian Geodetic Vertical Datum of 2013 (CGVD2013). Elevations are in metres above sea level (MSL).
  4. The Regulatory Floodplain lines shown in this map were prepared using hydraulic models as described in: KGS Group, 2024, "Trent River Floodplain Mapping Update - Floodplain Mapping Report"



All units are metric and in metres unless otherwise specified. Transverse Mercator Projection, NAD83 UTM Zone 18 CSRS. Elevations are in metres above sea level (MSL).

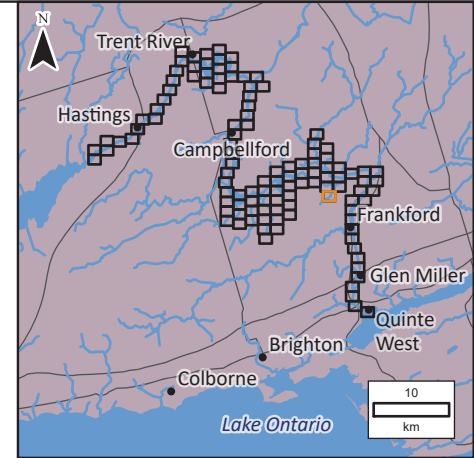
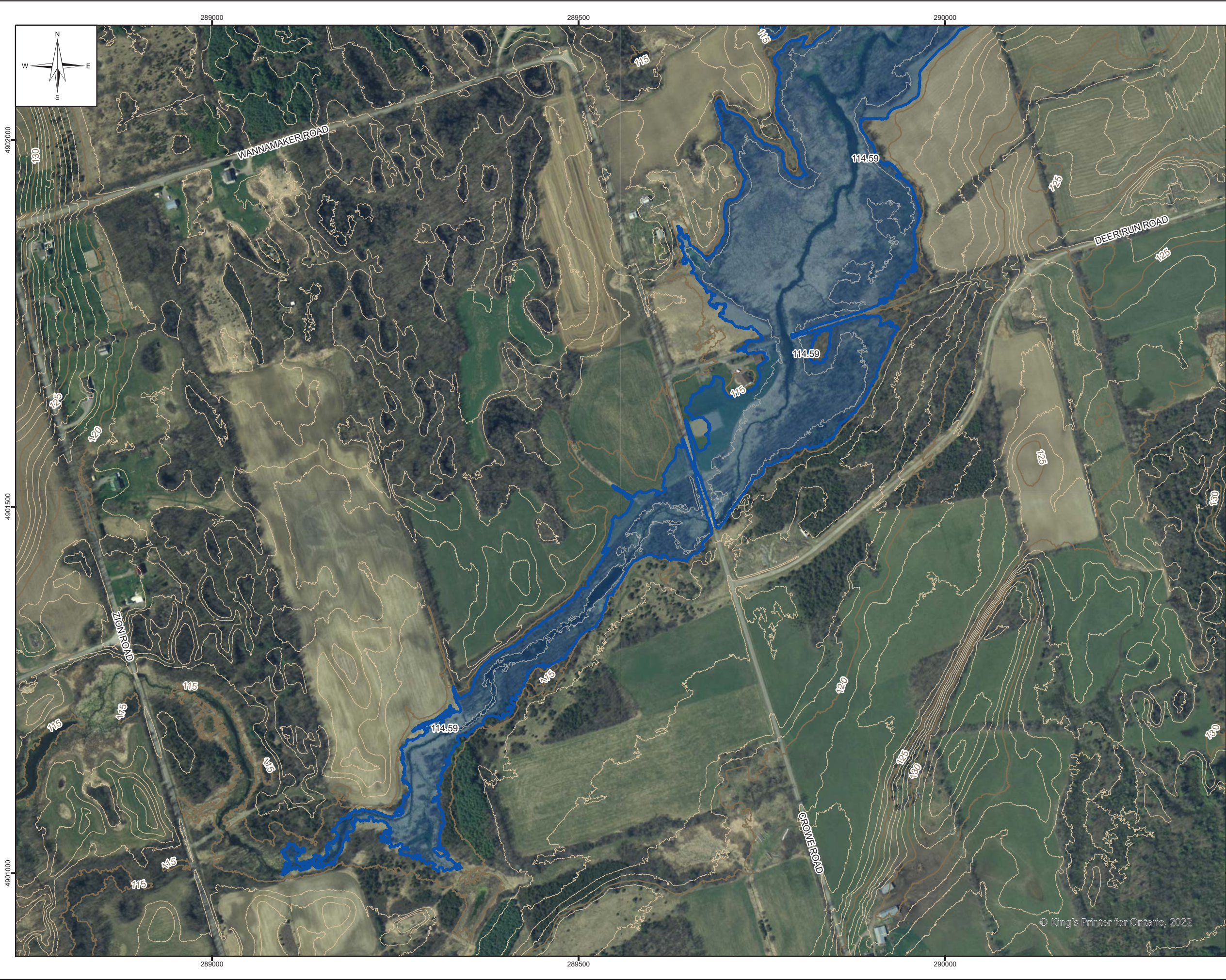
NO	24/02/29	ISSUED WITH FINAL REPORT	FGC	AB
NO	YYMMDD	DESCRIPTION	ISSUED BY	CHECK BY

REVISIONS / ISSUE

TRENT RIVER FLOODPLAIN MAPPING UPDATE

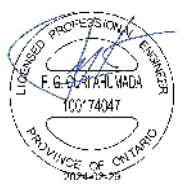
REGULATORY FLOODPLAIN MAP

FEBRUARY 2024	(SHEET 92 OF 117)	REV: 0
---------------	-------------------	--------



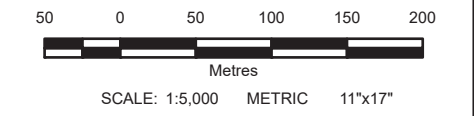
**LEGEND:**

- Station Number, Regulatory Flood Elevation (metres)
- 80.02 Water Surface Elevation
- Cross Section
- 5 m Index Contour
- 1 m Contour
- 2D Model Extent
- Regulatory Floodplain (100 Year - 1% AEP)



**NOTES:**

1. LIDAR elevation dataset provided by Land Information Ontario (LIO) and Natural Resources Canada (NRCAN). Datasets included OMAFRA (Peterborough) dated 2016-2017 (LIO) and Belleville dated 2022 (NRCAN).
2. Aerial photography, dated 2013, was provided by Land Information Ontario (LIO) as part of the South Central Orthophotography Project (SCOOP).
3. Maps are prepared in Projection NAD 83, UTM Zone 18, CSRS. Vertical reference datum used is Canadian Geodetic Vertical Datum of 2013 (CGVD2013). Elevations are in metres above sea level (MSL).
4. The Regulatory Floodplain lines shown in this map were prepared using hydraulic models as described in: KGS Group, 2024, "Trent River Floodplain Mapping Update - Floodplain Mapping Report"



All units are metric and in metres unless otherwise specified. Transverse Mercator Projection, NAD83 UTM Zone 18 CSRS. Elevations are in metres above sea level (MSL).

NO.	YYMMDD	DESCRIPTION	ISSUED BY	CHECK BY
0	24/02/29	ISSUED WITH FINAL REPORT	FGC	AB

REVISIONS / ISSUE

TRENT RIVER FLOODPLAIN MAPPING UPDATE

REGULATORY FLOODPLAIN MAP

FEBRUARY 2024	(SHEET 93 OF 117)	REV: 0
---------------	-------------------	--------