



**RE: Notice of Public Information Session – Rawdon Creek**

**Date: December 22, 2023**

---

The general public are welcome and encouraged to attend the Public Information Center for the Rawdon Creek floodplain mapping update. The date and location are listed below.

**Date & Time:** January 16, 2024, 5:00pm to 7:00pm

**Location:** Stirling-Rawdon Council Chambers  
2529 Stirling-Marmora Road, Stirling, ON

### **Project Objective**

Accurate floodplain mapping is needed in the vicinity of large creeks to ensure the public are aware of existing flood hazard risks. It also allows for effective planning and regulation decisions.

Lower Trent Conservation Authority has partnered with the Township of Stirling-Rawdon along with provincial and federal partners to complete the 2024 Rawdon Creek Floodplain Mapping update. The driving forces for this project include climate change, improved modelling techniques and software capabilities, land use changes, and updated infrastructure within the Stirling urban core and its upstream stretch of river between the James Street and Goods Road.

### **What to Expect at the Public Information Session**

The Public Information Center is held to connect the public with municipal and regulations staff in advance of the official adoption of the floodplain mapping update. A draft copy of the floodplain mapping will be available at the meeting. Jewell Engineering Inc. has provided engineering services for the technical components of the mapping update. Jewell Engineering will provide a brief presentation at 5:15pm and staff will be available for the duration of the meeting time to receive input and answer any questions. Poster boards and a digital version of the mapping update will also be available.

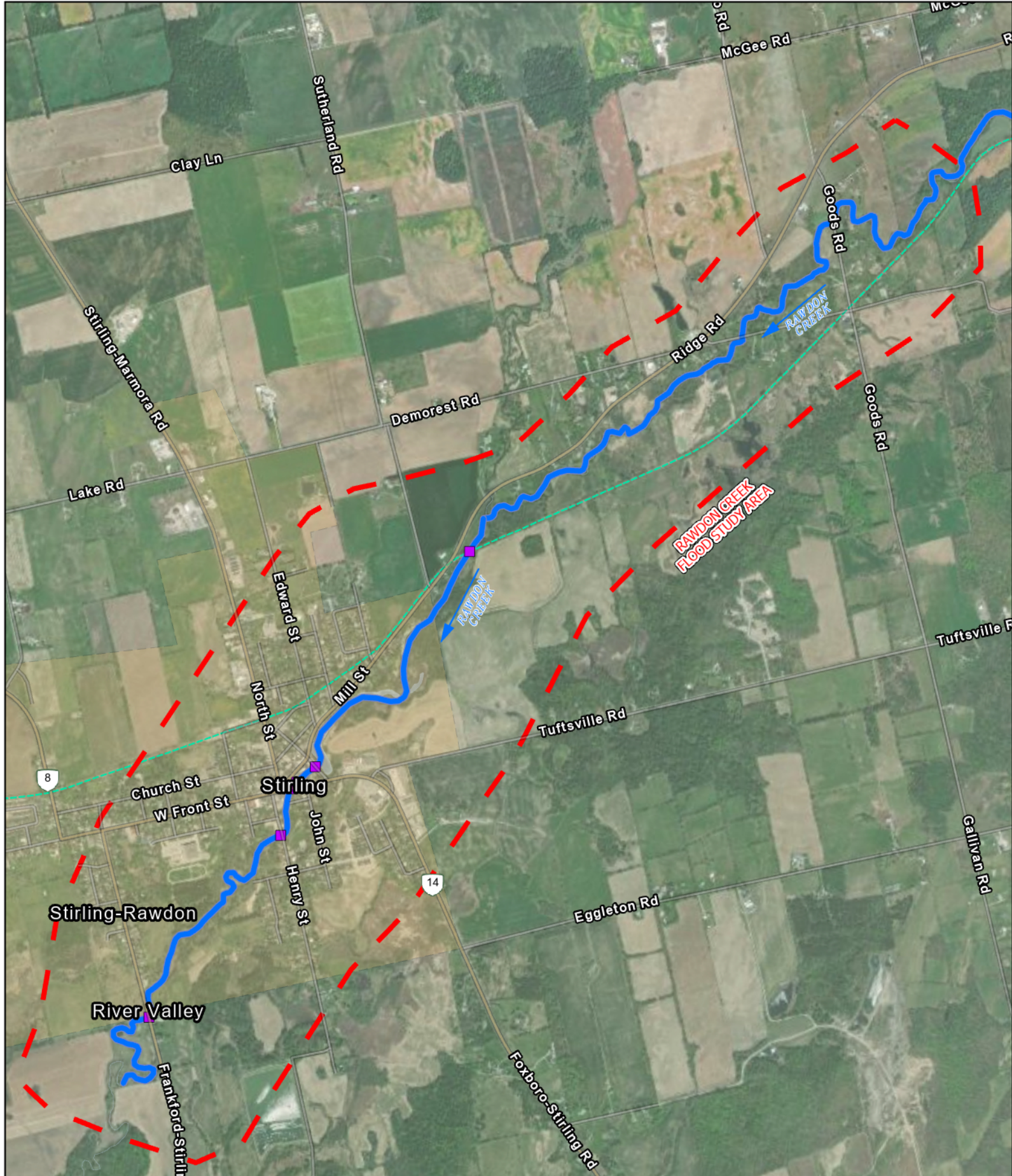
Please contact one of the project contacts below if you would like to be added to the project mailing list.



**Project Contacts:**

Elliott Fledderus, P.Eng.  
Jewell Engineering Inc.  
1-71 Millennium Pkwy  
Belleville ON K8N 4Z5  
Phone: 613-969-1111 ext. 242  
[elliott@jewelleng.ca](mailto:elliott@jewelleng.ca)

Gage Comeau,  
Manager, Watershed Management  
Lower Trent Conservation  
714 Murray Street  
Trenton ON K8V 0N1  
Phone: 613-394-4829 ext. 224  
[gage.comeau@ltc.on.ca](mailto:gage.comeau@ltc.on.ca)



**JEWELL ENGINEERING**  
 71 MILLENNIUM PARKWAY, UNIT 1  
 BELLEVILLE, ONT.  
 K8N - 4Z5  
 PHONE: 613-969-1111  
 TOLL FREE: 1-800-966-4338  
 FAX: 613-969-9988  
 WEB SITE: WWW.JEWELLENG.CA  
 EMAIL: INFO@JEWELLENG.CA

**RAWDON CREEK STUDY AREA**  

 LOWER TRENT CONSERVATION  
 Stirling Rawdon

SCALE: 1:30,000  
 1,200 600 0 1,200  
 Meters

**LEGEND**

- RIVER CROSSING STRUCTURES
- RAWDON CREEK WATER COURSE
- FLOOD STUDY AREA - RAWDON CREEK
- ONT TRAIL NETWORK
- RAIL ROAD TRACKS
- URBAN BOUNDARY
- WATER BODIES

LIDAR PROJECT CONTROL DATUM:  
 HORIZONTAL DATUM: NAD 83 CSRS  
 (EPOCH 2010.0)  
 VERTICAL DATUM: CGVD 2013

DRAWN BY: ASG  
 CHECKED BY: EF  
 APPROVED BY: BK  
 MAP DATE: 12\_22\_2023  
 PROJECT NUMBER: 2305293  
 MAP PAGE: F1