



RE: Notice of Public Information Center – Butler Creek & Arena Creek

Date: December 22, 2023

The general public are welcome and encouraged to attend the Public Information Center for the Butler & Arena Creek floodplain mapping updates. The date and location are listed below.

Date & Time: January 9, 2024, 5:00pm to 7:00pm

Location: Owen Gibb Community Centre – King Edward Park
75 Elizabeth Street, Brighton, ON

Project Objective

Accurate floodplain mapping is needed in the vicinity of large creeks to ensure the public are aware of existing flood hazard risks. It also allows for effective planning and regulation decisions.

Lower Trent Conservation Authority has partnered with the Municipality of Brighton along with provincial and federal partners to complete the 2024 Butler Creek Floodplain Mapping update. Arena Creek has also been included. The Butler Creek floodplain mapping was originally produced in 1978 and was last updated in 1988.

With 36 years since the last mapping update, the driving forces for this project include climate change, improved modelling techniques and software capabilities, land use changes, and updated infrastructure within the Town of Brighton.

What to Expect at the Public Information Center

The Public Information Center is held to connect the public with municipal and regulations staff in advance of the official adoption of the floodplain mapping update. A draft copy of the floodplain mapping will be available at the meeting. Jewell Engineering Inc. has provided engineering services for the technical components of the mapping update. Jewell Engineering will provide a brief presentation at 5:15pm and staff will be available for the duration of the meeting time to receive input and answer any questions. Poster boards and a digital version of the mapping update will also be available.

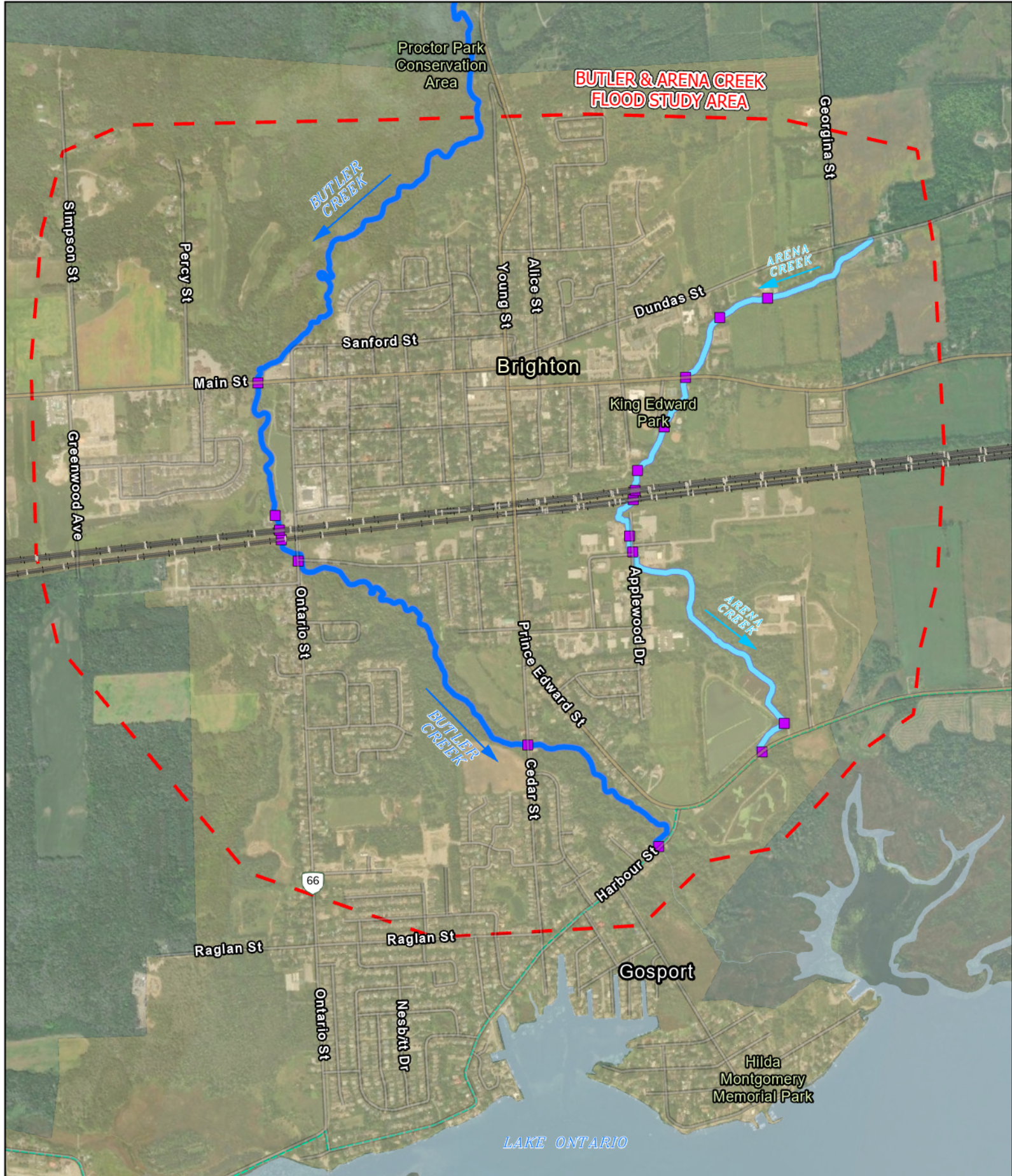
Please contact one of the project contacts below if you would like to be added to the project mailing list.



Project Contacts:

Elliott Fledderus, P.Eng.
Jewell Engineering Inc.
1-71 Millennium Pkwy
Belleville ON K8N 4Z5
Phone: 613-969-1111 ext. 242
elliott@jewelleng.ca

Gage Comeau,
Manager, Watershed Management
Lower Trent Conservation
714 Murray Street
Trenton ON K8V 0N1
Phone: 613-394-4829 ext. 224
gage.comeau@ltc.on.ca



JEWELL ENGINEERING
 71 MILLENNIUM PARKWAY, UNIT 1
 BELLEVILLE, ONT.
 K8N - 4Z5
 PHONE: 613-969-1111
 TOLL FREE: 1-800-966-4338
 FAX: 613-969-9988
 WEB SITE: WWW.JEWELLENG.CA
 EMAIL: INFO@JEWELLENG.CA

BUTLER AND ARENA CREEK STUDY AREA

LOWER TRENT CONSERVATION

BRIGHTON

Scale: 1:25,000

150 75 0 150 Meters

LEGEND

- RIVER CROSSINGS STRUCTURE
- BUTLER CREEK WATER COURSE
- ARENA CREEK WATER COURSE
- FLOOD STUDY AREA - BUTLER & ARENA CREEK
- ONT TRAIL NETWORK
- RAIL ROAD TRACKS
- WATER BODIES
- URBAN BOUNDARY

LIDAR PROJECT CONTROL DATUM:
 HORIZONTAL DATUM: NAD 83 CSRS
 (EPOCH 2010.0)
 VERTICAL DATUM: CGVD 2013

DRAWN BY: ASG
 CHECKED BY: EF
 APPROVED BY: BK
 MAP DATE: 12_22_2023
 PROJECT NUMBER: 2305292
 MAP PAGE: F1