

Lower Trent Region Watershed Report Card 2023



Lower Trent Region Conservation Authority has prepared this modified report card as a summary of the state of your water resources through surface water quality.



LOWER TRENT
CONSERVATION



WHERE ARE WE?



What is a Watershed?

A watershed is an area of land drained by a creek or stream into a river which then drains into a body of water such as a lake or pond. Everything in a watershed is connected. Our actions upstream can affect conditions downstream.

The Lower Trent Conservation watershed region includes the furthest downstream section of the Trent River watershed. It includes the Trent River, which flows out of Rice Lake to the Bay of Quinte at Trenton, and eight main tributaries. The watershed region also includes a number of smaller watercourses that flow directly into Lake Ontario and the Bay of Quinte from Grafton to Quinte West.

Why Measure?

Measuring helps us better understand our watershed. We can target our work where it is needed and track progress. We measured:



Surface Water
Quality

What is a watershed report card?

Ontario's Conservation Authorities report on watershed conditions every five years. The watershed report cards use Conservation Ontario guidelines and standards developed by Conservation Authorities and their partners.



Lower Trent Region

SURFACE WATER QUALITY

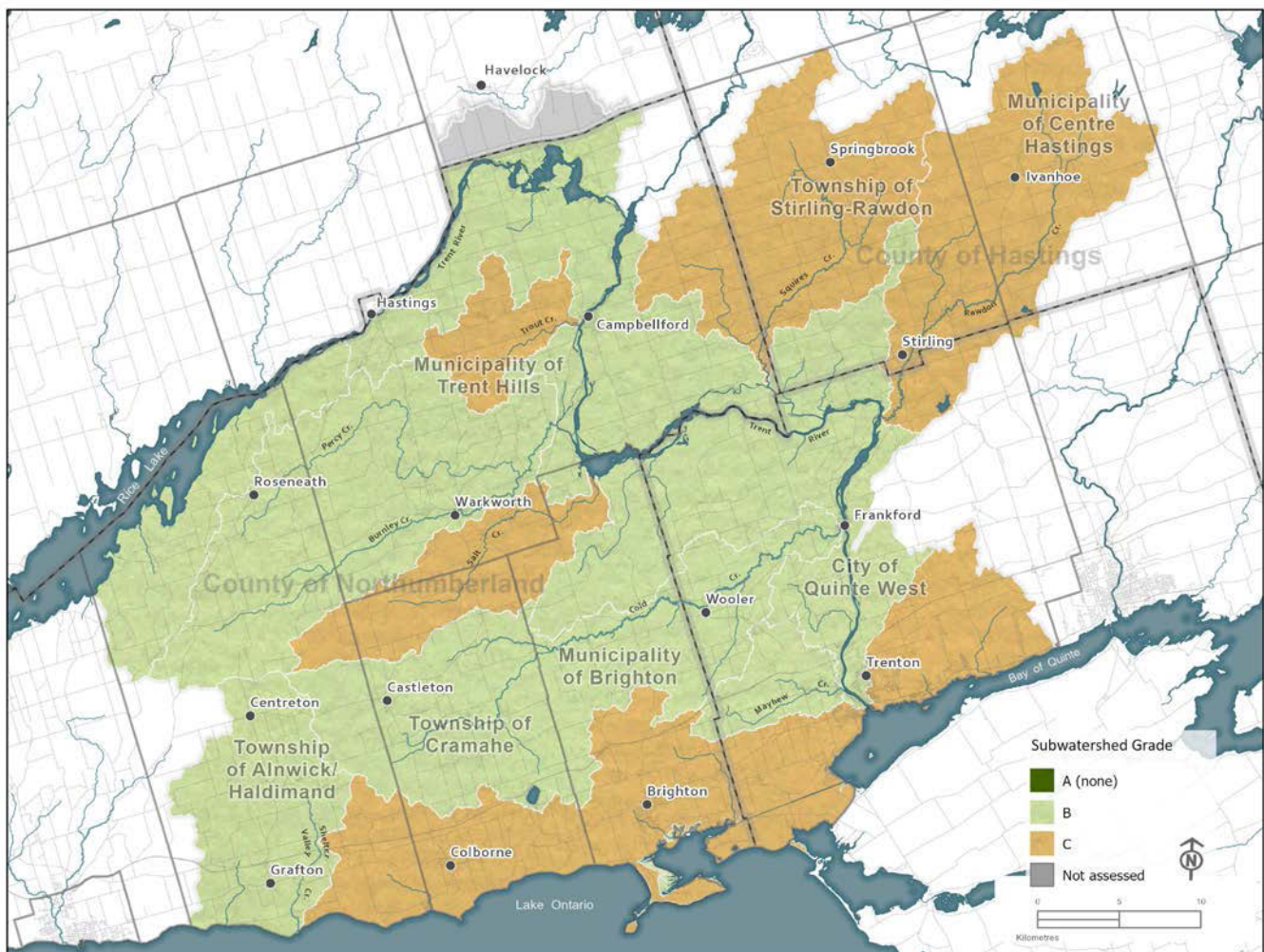
GRADE

C

Surface Water Quality is an important component within our watersheds, as it assesses the quality of the water for both human and aquatic life. Surface Water Quality in our region is monitored primarily through chemical analysis and the identification of aquatic bugs. Between the chemical make up of our water, and the presence of certain insect species, we can determine the health and anthropogenic disturbance level of our creeks and streams.

What Did We Find?

- B and C grades, with improvement in the Trent River Corridor Tributaries and Mayhew Creek.
- With the increase in sampling sites and inclusion of E. coli analysis for all of our 18 sampling sites, LTC has been able to provide grades for all 12 watersheds. This has allowed us to gain a better understanding of seven of our watersheds that weren't previously graded and we saw an improvement in two of our watersheds.



WHAT IS OUR WATERSHED'S KEY ISSUE?



Background:

The Watershed Report Card is a resource that is developed by Conservation Authorities across Ontario. The intent of this resource is to outline the conditions of our lakes, rivers, streams, groundwater, forests and wetland resources.

In 2018 Lower Trent Conservation provided a Watershed Report Card, with insufficient data for surface water, groundwater, wetlands and forest cover. Our municipal partners recognized the importance and value of this information and supported Lower Trent Conservation in the growth in our Surface Water Monitoring program.

Lower Trent Conservation has been able to focus our efforts to provide a more complete understanding of the Surface Water Quality throughout our watersheds, and is now able to provide grades for all of our watersheds.

Insufficient Data:

Due to a variety of issues, some of the parameters previously reported on were unable to be fully assessed, resulting in data gaps. As a result, Lower Trent Conservation is unable to provide grades or updates for the Forest Conditions and Wetland Cover previously evaluated in our 2018 Watershed Report Card. Further, the Provincial Groundwater Monitoring Network data is not comprehensive enough to provide an accurate grade of the wells currently monitored.

Future:

- Moving forward, LTC will continue to provide advice to local municipalities and the public regarding development near waterways and wetlands, and administering our Development, Interference with Wetlands and Alterations to Shoreline and Watercourses Regulation.
- We will continue to seek opportunities to enhance our monitoring programs and gain a better understanding of the forest and wetland conditions throughout our region.



LOWER TRENT
CONSERVATION

*Do you have questions not answered by this summary document?
Visit LTC.on.ca*

Lower Trent Conservation

714 Murray Street, R.R. 1 Trenton, Ontario, K8V 0N1

email: information@LTC.on.ca | **Website:** LTC.on.ca

Phone: 613-394-4829 | **Fax:** 613 394-5226